

Field Force Automation Made Easy.

How SOSMobile Helps with . . . Inventory Management

The Problem

Keeping track of the parts that are used in the field is one of the biggest challenges faced by any Utility. For those still using paper, deciphering tech notes—sometimes well after the parts are used—can quickly result in an inventory tracking mess.

One of the more popular SOSMobile features is its ability for field workers to enter the parts they use when out on a job. It even allows users to perform inventory counts on trucks and/or warehouses.

The captured data can either be sent back to a utility's Inventory System, or for those using SOSMobile as their inventory system, reports can be generated showing pertinent information.

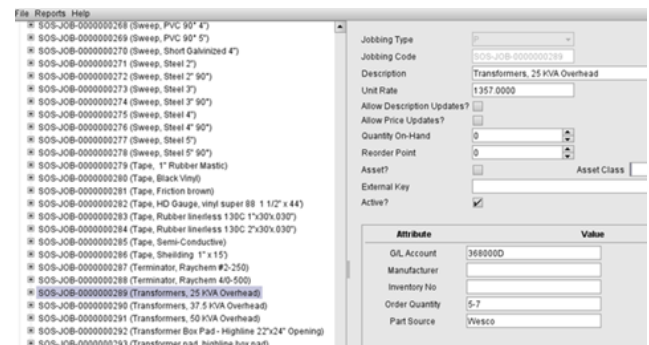


How It Works

SOSMobile maintains its own list of parts which can be imported to its database. And you can choose which items to make available to the field workers' mobile devices.

For utilities using separate Inventory Systems, this list can be updated automatically using a nightly sync operation.

While SOSMobile is not intended to be a full-featured Inventory Management System, many of our clients are using it to keep track of on-hand quantities, reorder points and to perform inventory counts.

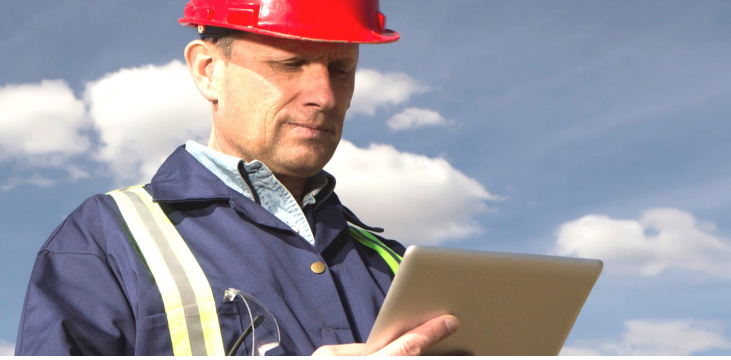


Example of parts list in SOSSetup.

SOSMobile Inventory Entry				
Part Number	Description	Quantity on Hand	Reorder Point	Unit Rate
SOS-JOB-0000000001	Anchor, Rock-Expanding 1" x 30"	20	10	42.7400
SOS-JOB-0000000113	Disconnects - Fusetube	50	15	71.4100
Transformer				
	Bracket, Equipment (transformer) 36765A SOS-JOB-0000000040			
	Bracket, Transformer secondary lead 91135 SOS-JOB-0000000047			
	Ground Connector, Transformer tank type TTC TTC 4P SOS-JOB-0000000144			
	Ground, Transformer Tank MPTG-820 SOS-JOB-0000000145			
	Transformers, 25 KVA Overhead SOS-JOB-0000000289			
	Transformers, 37.5 KVA Overhead SOS-JOB-0000000290			
	Transformers, 50 KVA Overhead SOS-JOB-0000000291			
	Transformer Box Pad - Highline 22"x24" Opening HL374332HGL SOS-JOB-0000000292			
	Transformer pad, highline box pad HL48-50 SOS-JOB-0000000293			

SOSMobile's Inventory Entry app allows users to easily add/update parts.

Our Inventory Entry app, with its search capabilities, allows users to more easily enter or update stock.



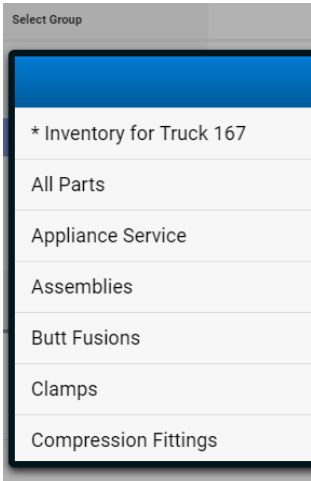
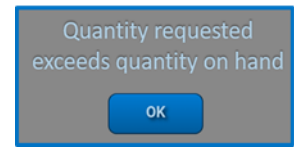
Field Force Automation for Utilities

In the field on the SOSRemote device, techs can easily search the parts list by part number, description, or with a barcode scanner.

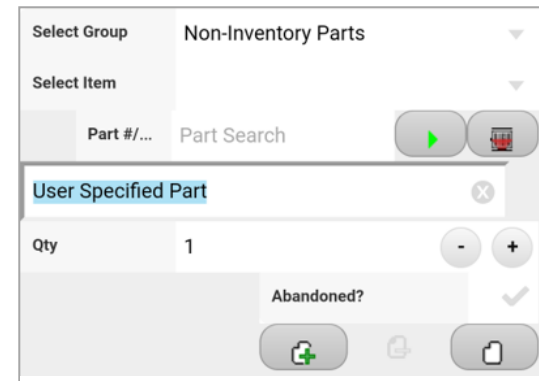
To facilitate the search, part subsets can be defined to narrow the parts list. This allows techs to view only a list of Poles, Clamps, Connectors, etc. Or defined "packages" representing a group of parts used for a particular job, like a Water Heater Conversion.

Some utilities create subsets that represent the parts on a particular truck. Edits can then alert them if the selected part is not on the truck.

Parts can be added to the list on-the-fly. So, say a tech goes to the local hardware store to pick up a part needed for a job. He then has the ability to type in that part. These parts would appear on reports but would not be automatically added to the actual parts list.



Subsets of inventory as seen on iOS/Android device



iOS/Android version of Inventory Entry Screen

Utilities with multiple warehouses may require the entry of a part source. Some may also require a charge code be associated with the item - particularly useful if applying charges to a customer's bill.

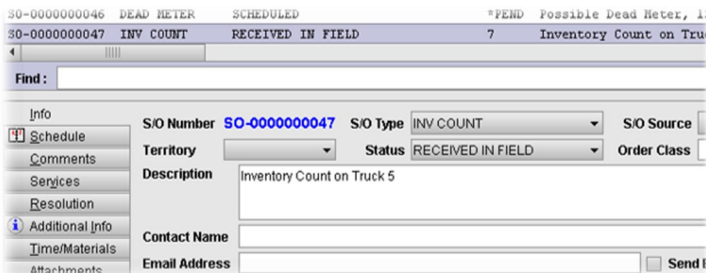
We can comply with whatever suits your needs!

Inventory Counts

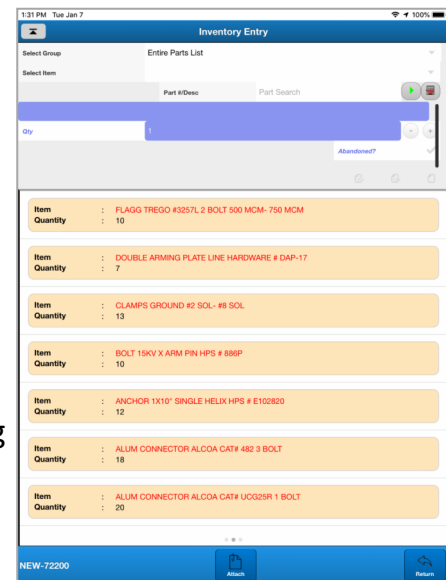
An "Inventory Count" order type can be added in SOSSetup, allowing users in the office to create an Inventory Count order using SOSDispatch, or the order can be created with the field device.

The user then uses the Inventory Entry Screen within the order Wizard to count the stock.

The Inventory Count order can remain open for as long as necessary, but each day's count will be sent to the office so data is available for reporting purposes.



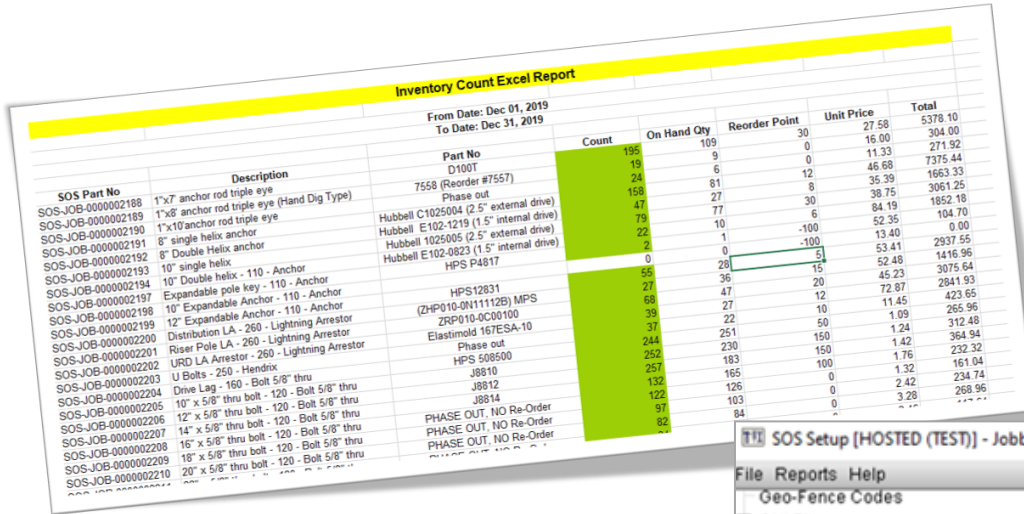
A new Inventory Count order in SOSDispatch



Inventory Entry Screen and associated counts as it appears on the iOS/Android version of SOSRemote

Field Force Automation for Utilities

Reports

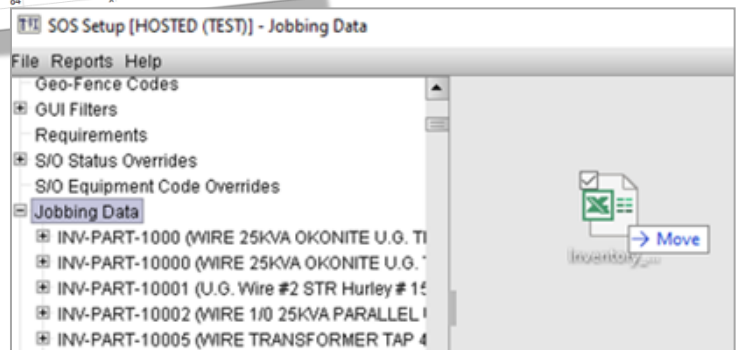


Inventory Count Excel Report							
From Date: Dec 01, 2019 To Date: Dec 31, 2019							
SOS Part No	Description	Part No	Count	On Hand Qty	Reorder Point	Unit Price	Total
SOS-JOB-000002188	1"x7" anchor rod triple eye	D100T	195	109	30	27.58	5378.10
SOS-JOB-000002189	1"x8" anchor rod triple eye	7558 (Reorder #7557)	19	9	0	16.00	304.00
SOS-JOB-000002190	1"x10" anchor rod triple eye	Phase out	24	6	12	11.33	271.92
SOS-JOB-000002191	8" single helix anchor	Hubbell C1025004 (2.5" external drive)	158	81	8	46.68	7375.44
SOS-JOB-000002192	8" Double Helix anchor	Hubbell E102-1219 (1.5" internal drive)	47	27	30	35.39	1663.33
SOS-JOB-000002193	10" single helix	Hubbell 1025005 (2.5" external drive)	79	77	6	38.75	3061.25
SOS-JOB-000002194	10" Double helix - 110 - Anchor	Hubbell E102-9823 (1.5" internal drive)	22	10	-100	84.19	1852.18
SOS-JOB-000002195	10" Expandable pole key - 110 - Anchor	HPS P4817	8	0	-100	52.35	104.70
SOS-JOB-000002196	10" Expandable Anchor - 110 - Anchor	Phase out	0	28	15	13.40	2937.55
SOS-JOB-000002197	12" Expandable Anchor - 110 - Anchor	HPS12831	58	36	20	52.48	1416.96
SOS-JOB-000002198	12" Expandable Anchor - 110 - Anchor	(ZHP010-0N11112B) MPS	27	47	12	45.23	3075.64
SOS-JOB-000002199	12" Expandable Anchor - 110 - Anchor	ZRP010-0C00100	39	27	10	72.87	2841.93
SOS-JOB-000002200	Distribution LA - 260 - Lightning Arrestor	Elastimold 16TESA-10	37	22	50	1.09	423.65
SOS-JOB-000002201	Riser Pole LA - 260 - Lightning Arrestor	Phase out	244	251	150	1.24	312.48
SOS-JOB-000002202	URD LA Arrestor - 260 - Lightning Arrestor	HPS 508500	253	230	150	1.42	364.94
SOS-JOB-000002203	U Bolts - 250 - Hendrix	J8810	132	183	100	1.32	174.24
SOS-JOB-000002204	Drive Lag - 160 - Bolt 5/8" thru	J8812	122	165	0	2.42	297.24
SOS-JOB-000002205	10" x 5/8" thru bolt - 120 - Bolt 5/8" thru	J8814	97	126	0	3.28	318.36
SOS-JOB-000002206	12" x 5/8" thru bolt - 120 - Bolt 5/8" thru	PHASE OUT, NO Re-Order	82	103	0	0	0
SOS-JOB-000002207	14" x 5/8" thru bolt - 120 - Bolt 5/8" thru	PHASE OUT, NO Re-Order	82	84	0	0	0
SOS-JOB-000002208	16" x 5/8" thru bolt - 120 - Bolt 5/8" thru	PHASE OUT, NO Re-Order	82	84	0	0	0
SOS-JOB-000002209	18" x 5/8" thru bolt - 120 - Bolt 5/8" thru	PHASE OUT, NO Re-Order	82	84	0	0	0
SOS-JOB-000002210	20" x 5/8" thru bolt - 120 - Bolt 5/8" thru	PHASE OUT, NO Re-Order	82	84	0	0	0

After performing inventory counts, quantity-on-hand amounts can easily be updated with actual count numbers within SOSMobile. Simply drag and drop the properly formatted file onto the SOSSetup application.

For utilities using separate Inventory Systems, updates between systems can be accomplished automatically with a nightly sync operation.

Since all the data entered in SOSMobile is logged and available for reporting purposes, Accounting has whatever information they need, including abandoned assets and knowing when it's time to reorder depleted stock.



Description	Part No	Inv No	Qty	Abandoned?	Unit Price	Total	Billable?	G/L Account
Street light, 70W Cobra Head Fixture	CRS-H OVH70SR22DH4	2542	-1	Y	76.47	-76.47	N	373000D
LED Street Light 24Watt	ATBS B MVOLT R2 3K MF		1		113.09	113.09	N	373
12/2 UF Cable			12		0.38	4.56	N	
Floodlight, 150W hps w/photoeye socket	ACP 15S XHMT176LC	2541	1		212.75	212.75	N	373000D
Floodlight, 150W hps w/photoeye socket	ACP 15S XHMT176LC	2541	-1	Y	212.75	-212.75	N	373000D
12/2 UF Cable			2		0.38	0.76	N	
Deadend, #2 preformed service	SG-4504	2301	1		0.92	0.92	N	593000
Sicame TTD2110XFBTUNII Main 4/0-2 Tap 2/0-6			3		8.27	24.81	N	593
Wire, #2 AL 7str Triplex XLP-ACC "Clam"	"Clam"	3340	10		0.79	7.90	N	365000D
Sicame TTD2110XFBTUNII Main 4/0-2 Tap 2/0-6			5		8.27	41.35	N	593
Sicame TTD9510XF Main 2/0-6 Tap 8-14			6		4.63	27.78	N	593
Wire, #6 SOL copper bare (soft drawn) 315ft roll	BS6SDSAR315	MISC	20		0.45	9.00	N	365000D
Street light, 70W Cobra Head Fixture	CRS-H OVH70SR22DH4	2542	-1	Y	76.47	-76.47	N	373000D
LED Street Light 24Watt	ATBS B MVOLT R2 3K MF		1		113.09	113.09	N	373
Sicame TTD2110XFBTUNII Main 4/0-2 Tap 2/0-6			1		8.27	8.27	N	593

In addition, reports can be sent to appropriate resources automatically at designated intervals. For example, Material Used reports can be sent to a warehouse allowing them to gather the necessary parts for restocking a vehicle in advance of its arrival.